

Atlanta Fine
Homes | Sotheby's
INTERNATIONAL REALTY

alcovy place

LOTS 7-10

DIGITAL BROCHURE



“THE LAST
OPPORTUNITY
TO BE DIRECTLY
ON *the* LOOP”

-Alpharetta locals

about the *builder*

MAIN STREET DESIGNS OF GEORGIA, LLC

Mayfair Residential

When you choose a Mayfair Residential home, you'll be rewarded with exceptional living opportunities including prized locations and a focus on walkable access to the heart of each community,



*Crafting exceptional homes
that provide the ideal setting for life.
This is not only our mission,
but our passion. Our luxury homes
in Atlanta are built with the
strength of a leadership team
with over 36 years of
homebuilding experience.*





ALPHARETTA ELEMENTARY SCHOOL

THE NEST CAFE

MAPLE STREET BISCUIT COMPANY

INNOVATION ACADEMY

FLATLANDS BOURBON & BAYOU

DOWNTOWN ALPHARETTA

MANNIING OAKS ELEMENTARY SCHOOL

SOUTH MAIN KITCHEN

SMOKEJACK BBQ

ALPHARETTA CITY CENTER

LAPEER STEAK & SEAFOOD

TBB 122

CRUST PASTA & PIZZERIA

PUBLIX

ALCOVY PLACE

WESTSIDE PARK

SUPERICA

RESTAURANT

AVALON

OAK STEAKHOUSE

WHOLE FOODS MARKET

SHAKE SHACK ALPHARETTA

FAIRWAY SOCIAL ALPHARETTA

VIVA CHICKEN ALPHARETTA

RUTH'S CHRIS STEAK HOUSE

INTERNATIONAL CHARTER SCHOOL OF ATLANTA

about *alpharetta*

Discover Alpharetta, GA, a vibrant Southern town just 30 minutes from Atlanta, blending urban energy with small-town charm. Explore its array of shops, dining, events, and more. Recognized as one of The South's Best Cities On The Rise 2024 by Southern Living® readers, Alpharetta boasts over 300 unique experiences nestled between the North Georgia Mountains and Atlanta. Start your adventure today!

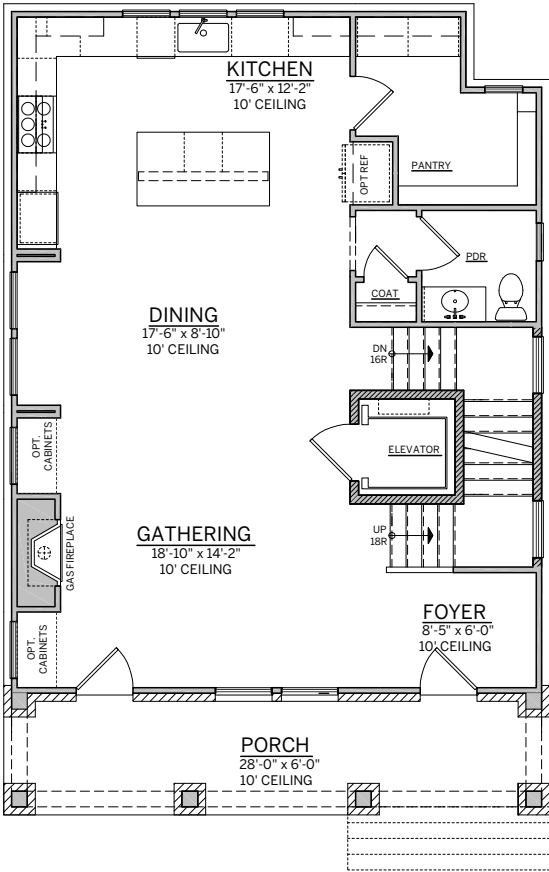
floor *plans*

LOT 7

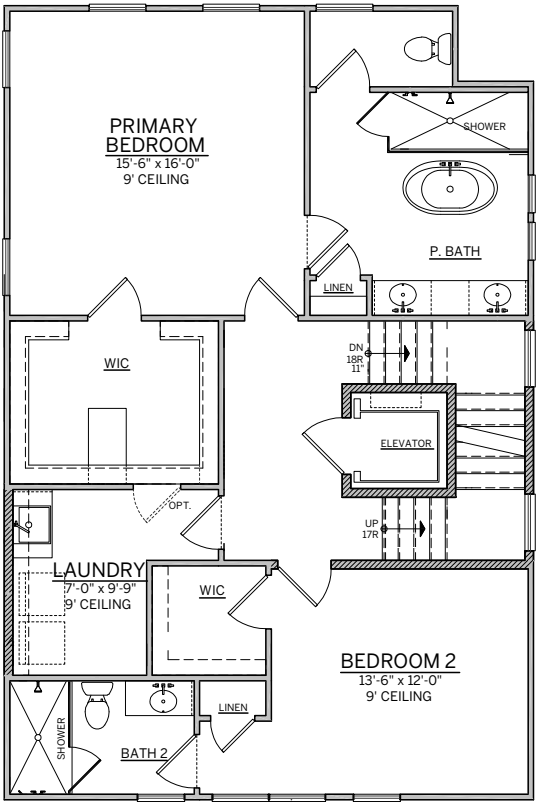


FRONT ELEVATION

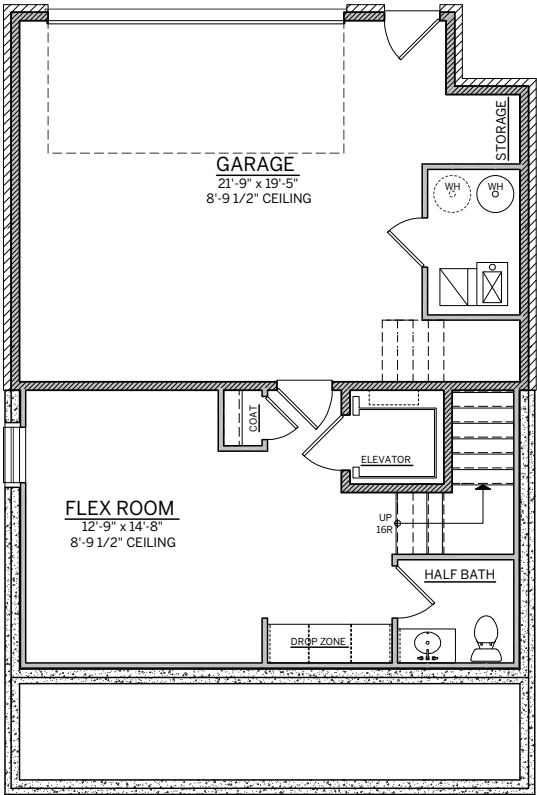
Lot 7



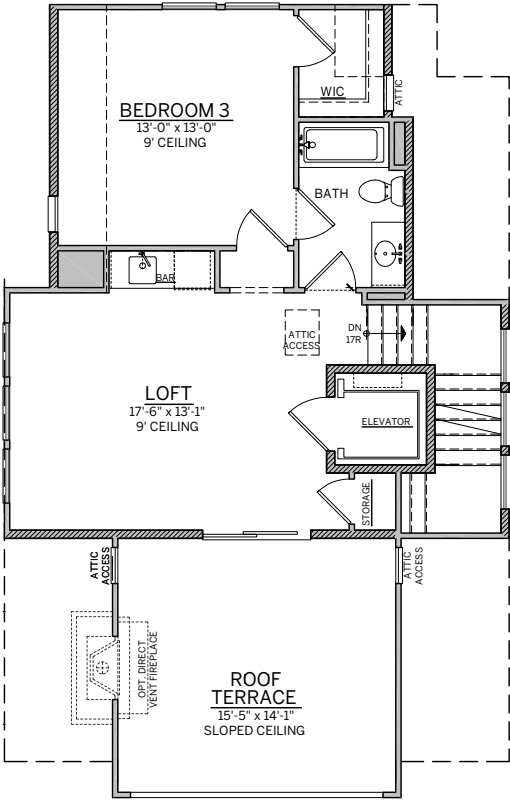
FIRST FLOOR



SECOND FLOOR



BASEMENT



HABITABLE ATTIC

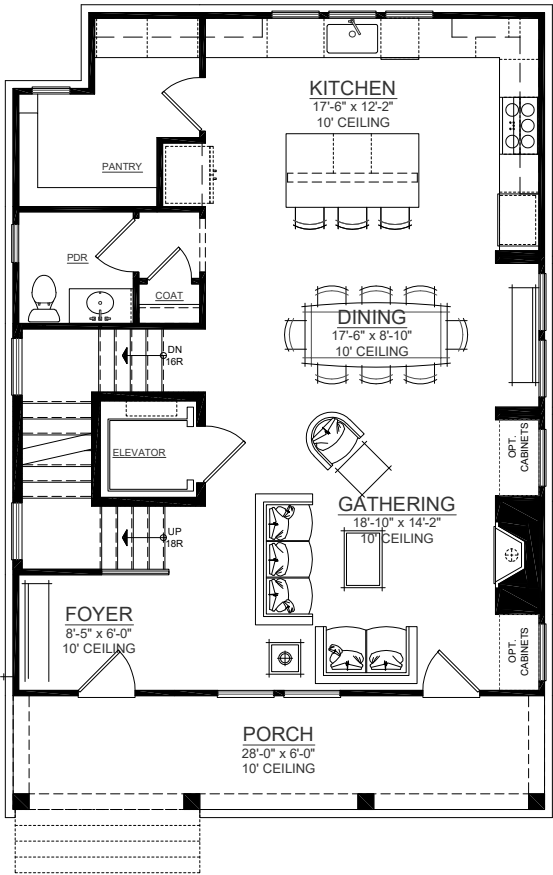
floor *plans*

LOT 8

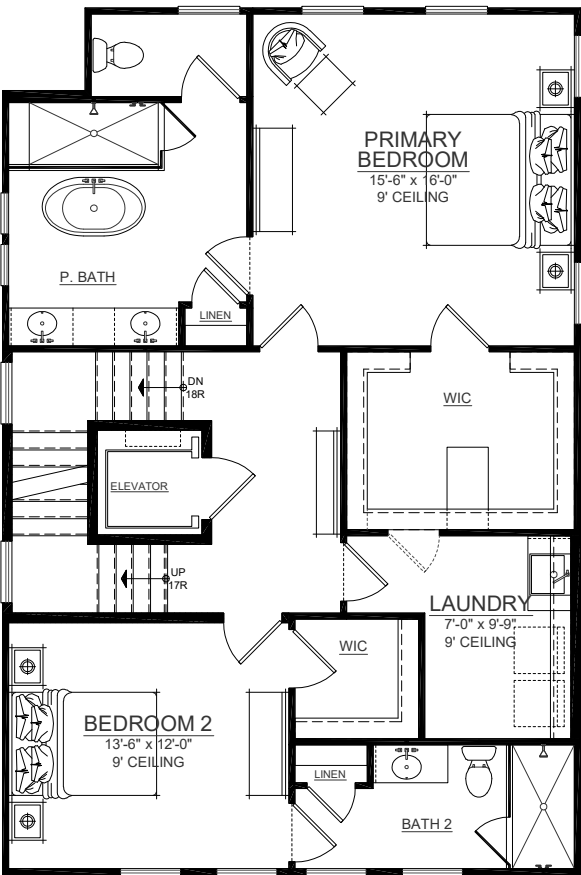


FRONT ELEVATION

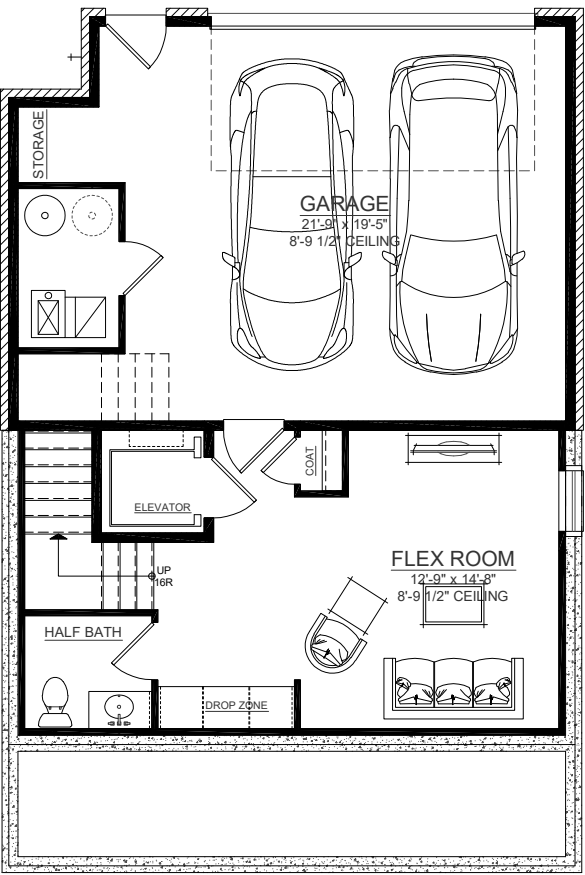
Lot 8



FIRST FLOOR



SECOND FLOOR



BASEMENT



HABITABLE ATTIC

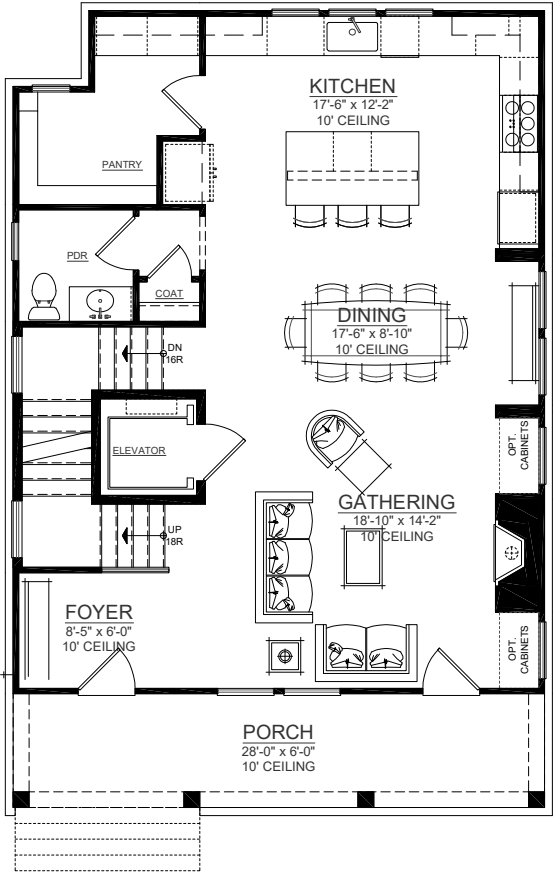
floor *plans*

LOT 9

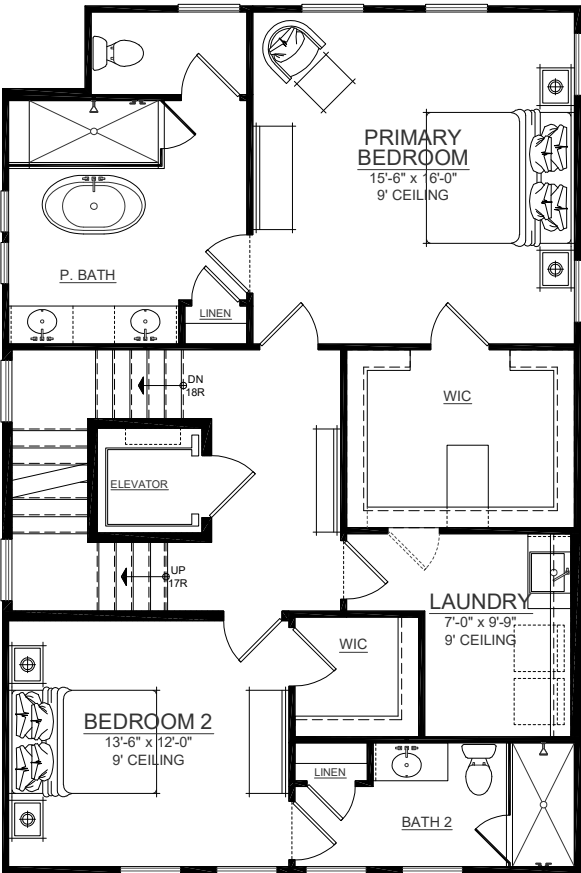


FRONT ELEVATION

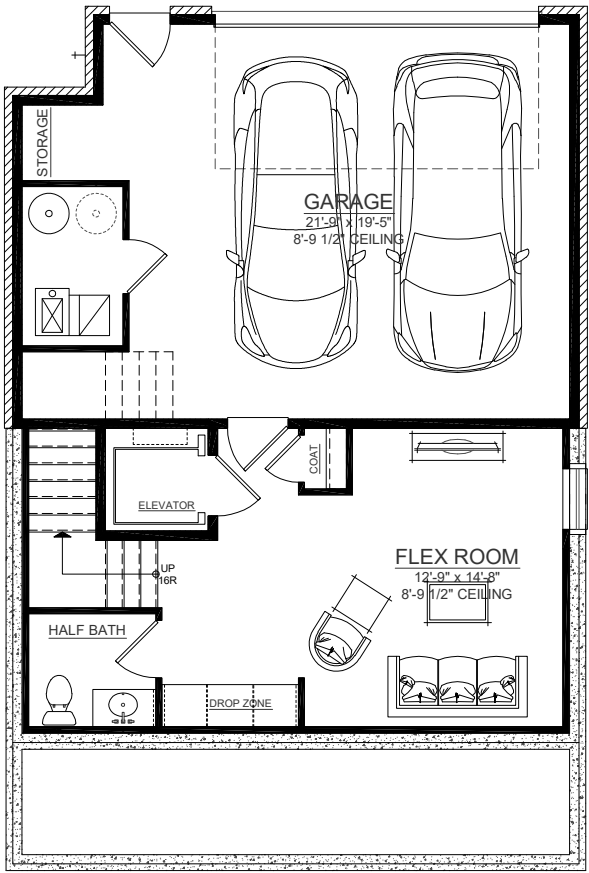
Lot 9



FIRST FLOOR



SECOND FLOOR



BASEMENT



HABITABLE ATTIC

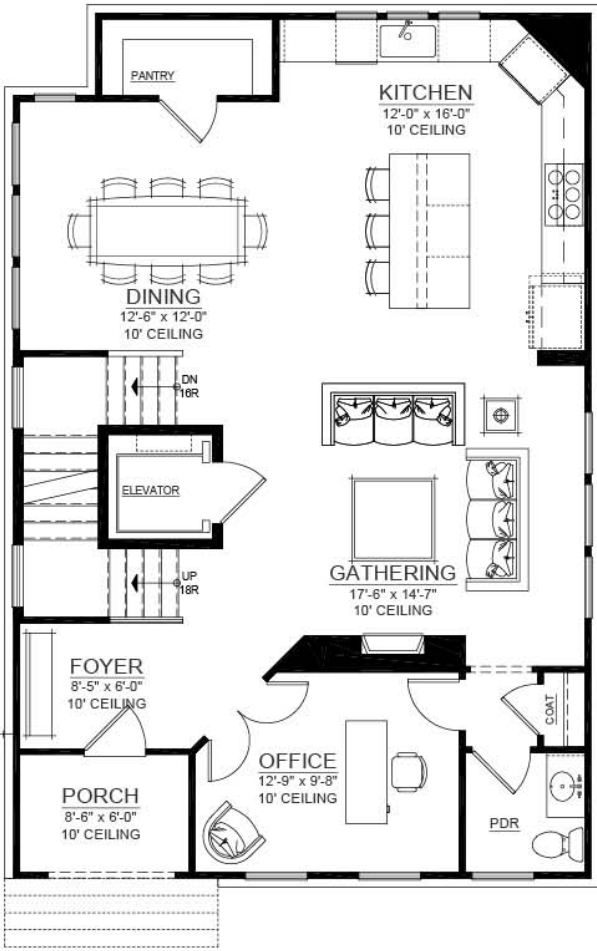
floor *plans*

LOT 10

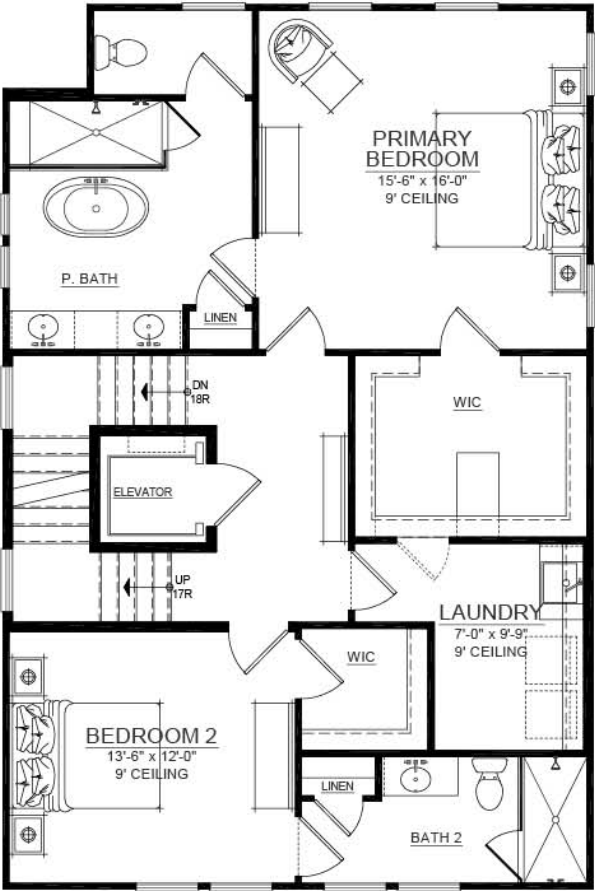


FRONT ELEVATION

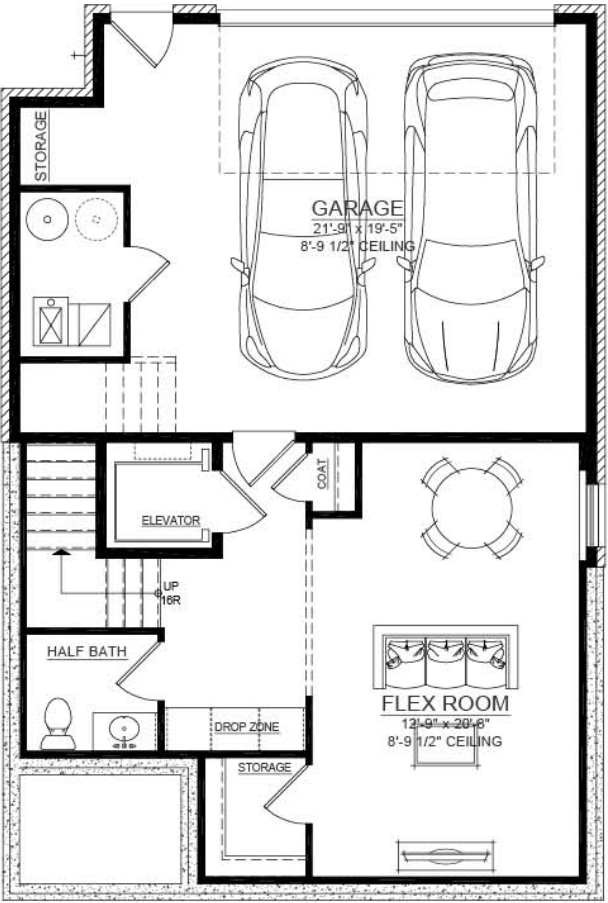
Lot 10



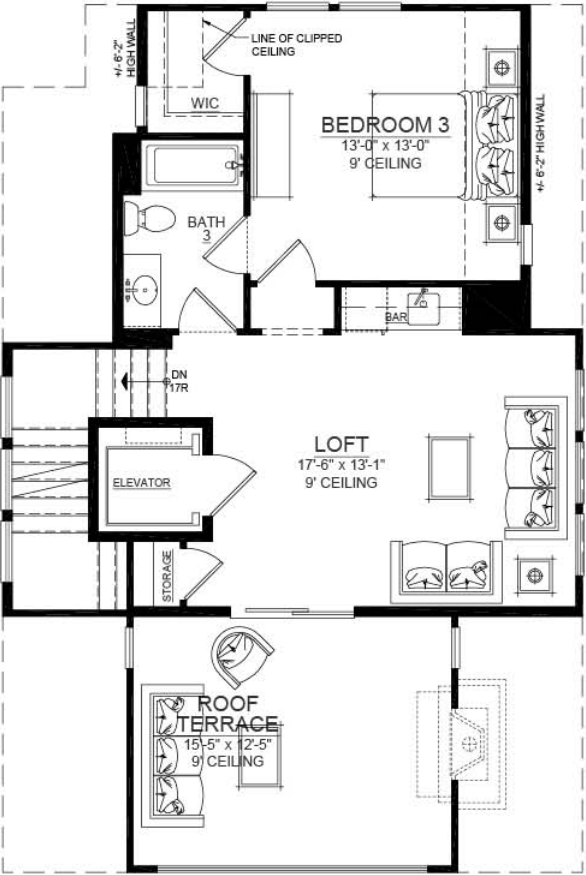
FIRST FLOOR



SECOND FLOOR



BASEMENT



HABITABLE ATTIC

site plan + *pricing*



LOT	BR	3 BR/ BA COUNT	4 BR/ BA COUNT	GARAGE	SQ. FT.	PRICE
Homesite 7	3 or 4	3 Full / 2 Half	4 Full / 1 Half	2	3,163±	\$1,695,000
Homesite 8	3 or 4	3 Full / 2 Half	4 Full / 1 Half	2	3,141±	\$1,690,000
Homesite 9	3 or 4	3 Full / 2 Half	4 Full / 1 Half	2	3,146±	\$1,675,000
Homesite 10	3 or 4	3 Full / 2 Half	4 Full / 1 Half	2	3,372±	\$1,715,000

contact

FOR SALES INFORMATION



RONY GHELERTER

c. 703.899.6663 o. 770.442.7300
ronyghelerter@atlantafinehomes.com
ronyghelerter.atlantafinehomes.com



Atlanta Fine
Homes | Sotheby's
INTERNATIONAL REALTY

1125 Sanctuary Parkway, Suite 400, Alpharetta, Georgia 30009 | 770.442.7300

atlantafinehomes.com | sothebysrealty.com

©Sotheby's International Realty Affiliates LLC. A Realogy Company. All Rights Reserved.
Sotheby's International Realty® is a registered trademark licensed to Sotheby's International Realty Affiliates LLC. An equal Opportunity Company. Equal Housing Opportunity.